

# FUN WITH THE UKULELE

## LEARNING TO READ MUSIC



By Roger Humphrey

**Staff and notes.....3**

**Our first notes .....4**

**Understanding sharps .....13**

**Fun songs to play .....14**

**Dotted quarter notes .....16**

# STAFF AND NOTES

## MUSIC STAFF



The basic music staff is made up of five (5) lines and four (4) spaces between the lines. In addition, the space above and the space below the staff is also used. Each line and each space represents a different tone.

## SHAPES OF NOTES

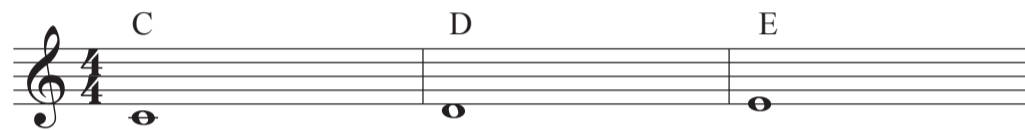
The shape of a note determines how fast or slow it is played.

 **Whole Note** receives 4 beats

 **Half Note** receives 2 beats

 **Quarter Note** receives 1 beat

# OUR FIRST NOTES



A musical staff in 4/4 time with a treble clef. It contains three measures, each with a single half note. The first measure is labeled 'C' and has the note on the third line. The second measure is labeled 'D' and has the note on the second space. The third measure is labeled 'E' and has the note on the first space.

String 3 open      String 3, fret 2      String 2 open

Exercise 1



A musical staff in 4/4 time with a treble clef. It contains a sequence of 16 quarter notes: C, D, E, F, G, A, B, C, D, E, F, G, A, B, C, D.

Exercise 2



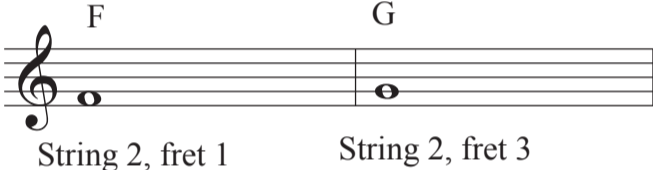
A musical staff in 4/4 time with a treble clef. It contains a sequence of 16 quarter notes: C, D, E, F, G, A, B, C, D, E, F, G, A, B, C, D.

Exercise 3



A musical staff in 4/4 time with a treble clef. It contains a sequence of 16 quarter notes: C, D, E, F, G, A, B, C, D, E, F, G, A, B, C, D.

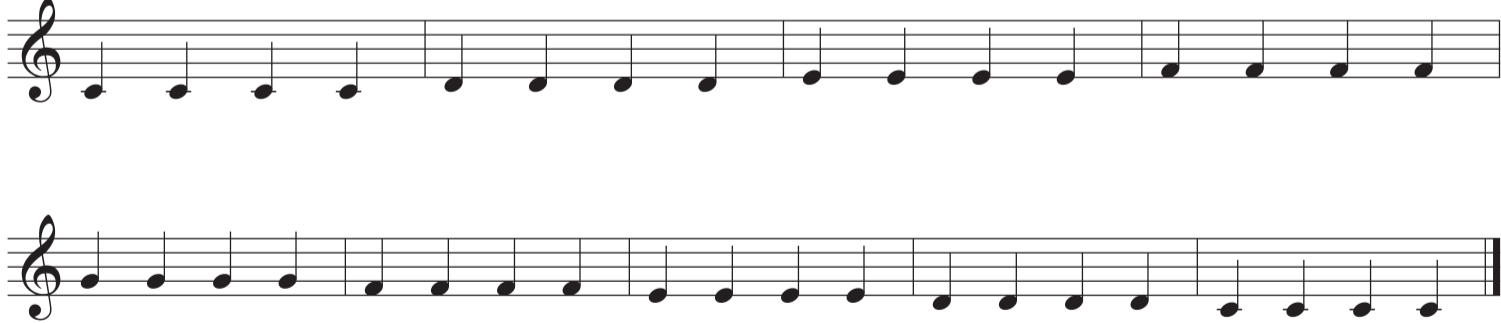
Hot Cross Buns



Exercise 4



Exercise 5



Exercise 6

Exercise 6 is written in 4/4 time on two staves. The first staff begins with a treble clef and a 4/4 time signature. The melody consists of a sequence of eighth notes: C4, D4, E4, F4, G4, A4, B4, C5, B4, A4, G4, F4, E4, D4, C4. The second staff continues the sequence: C4, D4, E4, F4, G4, A4, B4, C5, B4, A4, G4, F4, E4, D4, C4, ending with a whole note C4.

Exercise 7

Exercise 7 is written in 4/4 time on a single staff. The melody consists of a sequence of eighth notes: C4, D4, E4, F4, G4, A4, B4, C5, B4, A4, G4, F4, E4, D4, C4, ending with a whole note C4.

Exercise 8

Exercise 8 is written in 4/4 time on two staves. The first staff begins with a treble clef. The melody consists of a sequence of eighth notes: C4, D4, E4, F4, G4, A4, B4, C5, B4, A4, G4, F4, E4, D4, C4. The second staff continues the sequence: C4, D4, E4, F4, G4, A4, B4, C5, B4, A4, G4, F4, E4, D4, C4, ending with a whole note C4.

## Mary Had a Little Lamb

Musical notation for 'Mary Had a Little Lamb' in 4/4 time. The first staff shows the melody with quarter and eighth notes. The second staff shows the accompaniment, primarily consisting of quarter notes.

Diagram showing fretting positions for notes A, B, and C on the first string:

- A: String 1 open
- B: String 1, fret 2
- C: String 1, fret 3

## Exercise 9

Musical notation for Exercise 9, a single-line melody on a treble clef staff consisting of quarter notes.

## Exercise 10

REPEAT SIGN  
play this one more time

Musical notation for Exercise 10, a single-line melody on a treble clef staff consisting of quarter notes, ending with a repeat sign.

## Exercise 11

Exercise 11 is a musical exercise in 4/4 time, consisting of four staves. The first staff begins with a treble clef and a 4/4 time signature. The melody consists of a sequence of eighth notes: C4, D4, E4, F4, G4, A4, B4, C5, B4, A4, G4, F4, E4, D4, C4. The second staff continues the melody with eighth notes: D4, E4, F4, G4, A4, B4, C5, B4, A4, G4, F4, E4, D4, C4. The third staff continues with eighth notes: E4, F4, G4, A4, B4, C5, B4, A4, G4, F4, E4, D4, C4. The fourth staff concludes the exercise with eighth notes: F4, G4, A4, B4, C5, B4, A4, G4, F4, E4, D4, C4, and ends with a double bar line and repeat dots.

## Exercise 12

Exercise 12 is a musical exercise in 4/4 time, consisting of two staves. The first staff begins with a treble clef and a 4/4 time signature. The melody consists of a sequence of eighth notes: C4, D4, E4, F4, G4, A4, B4, C5, B4, A4, G4, F4, E4, D4, C4. The second staff continues the melody with eighth notes: D4, E4, F4, G4, A4, B4, C5, B4, A4, G4, F4, E4, D4, C4, and ends with a double bar line and repeat dots.



Jingle Bells

Musical notation for the song "Jingle Bells" in 4/4 time, consisting of four staves of music. The first staff begins with a treble clef and a 4/4 time signature. The melody is written in a single line on a five-line staff. The notes are: C4, D4, E4, F4, G4, A4, B4, C5, B4, A4, G4, F4, E4, D4, C4. The second and third staves contain the same melody. The fourth staff contains the same melody but includes a double bar line at the end, indicating the end of the piece.

Row, Row, Row Your Boat

Musical notation for the song "Row, Row, Row Your Boat" in 4/4 time, consisting of two staves of music. The first staff begins with a treble clef. The melody is written in a single line on a five-line staff. The notes are: C4, D4, E4, F4, G4, A4, B4, C5, B4, A4, G4, F4, E4, D4, C4. The second staff contains the same melody but includes a double bar line at the end, indicating the end of the piece.

## Exercise 13 (C Major Scale)

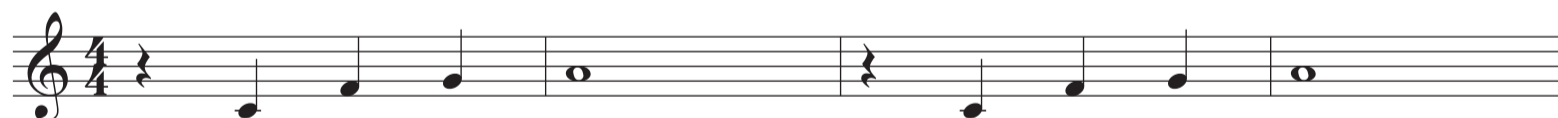


## Exercise 14



**QUARTER REST**  
1 beat of silence

## How Dry I Am



**FLAT**  
Lowers note 1 fret

Musical notation showing four measures on a single staff in 4/4 time. Each measure contains a single half note on the first string. The notes are labeled above the staff as D, E, F, and G. Below the staff, the corresponding fret numbers are listed: string 1 fret 5, string 1 fret 7, string 1 fret 8, and string 1 fret 10.

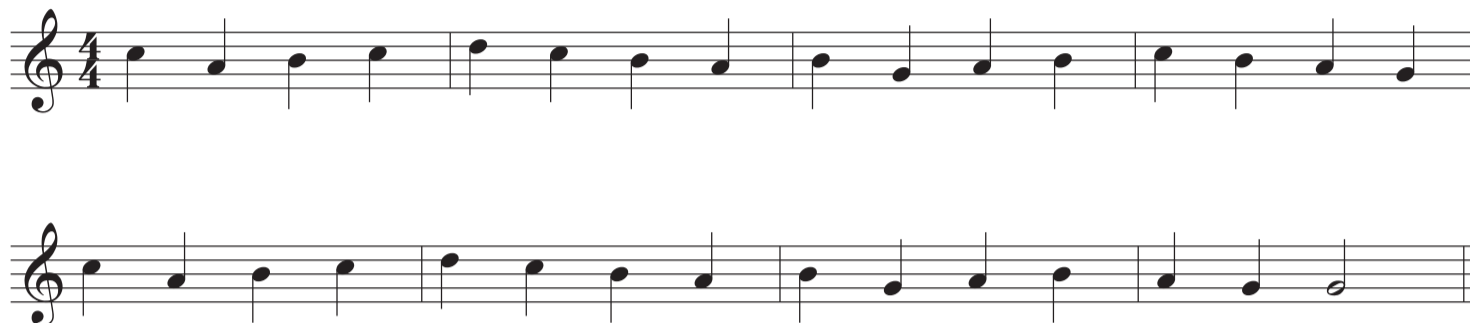
Exercise 15

Exercise 15 consists of two staves of music in 4/4 time. The first staff contains a sequence of eight quarter notes: D, E, F, G, A, B, C, D. The second staff contains a sequence of eight quarter notes: D, E, F, G, A, B, C, D, followed by a whole note D in the final measure.

Exercise 16

Exercise 16 consists of two staves of music in 4/4 time. The first staff contains a sequence of eight quarter notes: D, E, F, G, A, B, C, D. The second staff contains a sequence of eight quarter notes: D, E, F, G, A, B, C, D, followed by a whole note D in the final measure.

## Etude 1



## Lullabye

J. Brahms

Musical score for Lullabye by J. Brahms, consisting of four staves of music in 3/4 time. The first staff contains the first two measures, the second staff the next two, the third staff the next two, and the fourth staff the final two measures. The melody is characterized by a lullaby-like, rocking motion.

# UNDERSTANDING SHARPS

## Understanding Sharps

A **SHARP SIGN (#)** raises a note 1/2 step (1 fret). It is placed directly in front of the note that is affected.

The image displays three musical staves, each representing a guitar string, with notes and sharp signs (#) indicating fret positions. The 3rd String staff shows notes at frets 0, 1 (sharp), 2, and 3 (sharp). The 2nd String staff shows notes at frets 0, 1, 2 (sharp), 3, and 4 (sharp). The 1st String staff shows notes at frets 0, 1 (sharp), 2, and 3. Each staff begins with a treble clef and a 4/4 time signature. The fret numbers are written below the notes.

3rd String

2nd String

1st String

# FUN SONGS TO PLAY

## Fur Elise

L. V. Beethoven



# Red River Valley



# DOTTED QUARTER NOTES

Two measures of music in 4/4 time. The first measure contains four quarter notes on a single line, with stems pointing down. The second measure also contains four quarter notes on a single line, with stems pointing down. A bar line separates the two measures.

count 1 2 3 4 1 2 3 4

Two measures of music in 4/4 time. Each measure contains four dotted quarter notes on a single line, with stems pointing down. The notes in each measure are beamed together in pairs. A bar line separates the two measures.

count 1 & 2 & 3 & 4 & 1 & 2 & 3 & 4 &

Two measures of music in 4/4 time. Each measure contains four dotted quarter notes on a single line, with stems pointing down. The notes in each measure are beamed together in pairs. A bar line separates the two measures, and a final bar line is at the end of the second measure.

count 1 & 2 & 3 & 4 & 1 & 2 & 3 & 4 &



## AULD LANG SYNE



# Humoresque (theme)

A. Dvorak

