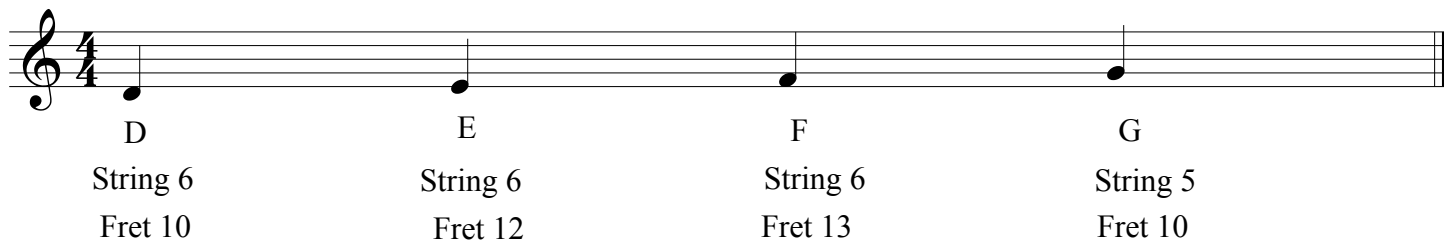


# Note Spelling Exercises

## level 3



D String 6 Fret 10  
E String 6 Fret 12  
F String 6 Fret 13  
G String 5 Fret 10

Write in the names under each note then play them while saying the names out loud.

Ex. 1



Ex. 2



Ex.3



Ex. 4



20

A single musical staff in treble clef showing four notes: A4, B4, C5, and D5. Each note is positioned on a specific string and fret.

A  
String 5  
Fret 12

B  
String 4  
Fret 9

C  
String 4  
Fret 10

D  
String 4  
Fret 12

21 Ex. 5



28 Ex. 6



Ex. 7

32

Ex. 8

36

40

Ex. 9

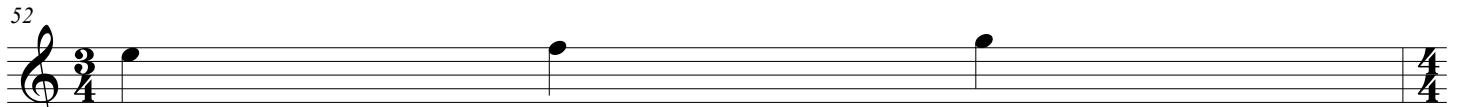
44

Ex. 10

48

Note Spelling Exercises  
level 3

52



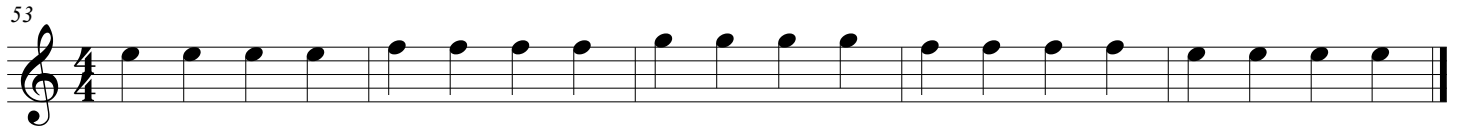
String 3    String 3    String 3

Fret 9    Fret 10    Fret 12

Detailed description: A musical staff in 4/4 time with a treble clef. It contains three whole notes: E on the 9th fret, F on the 10th fret, and G on the 12th fret of String 3. The notes are placed on the second, third, and fourth lines of the staff respectively.

Ex. 11

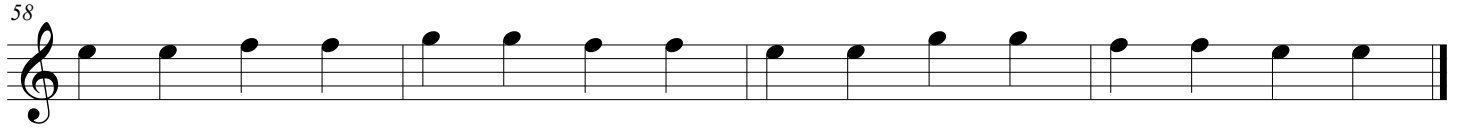
53



Detailed description: A musical staff in 4/4 time with a treble clef. It contains a sequence of 16 eighth notes in a single line, starting on E (9th fret) and ascending stepwise to G (12th fret).

Ex. 12

58



Detailed description: A musical staff in 4/4 time with a treble clef. It contains a sequence of 16 eighth notes in a single line, starting on E (9th fret) and ascending stepwise to G (12th fret).

Ex. 13

62



Detailed description: A musical staff in 4/4 time with a treble clef. It contains a sequence of 16 eighth notes in a single line, starting on E (9th fret) and ascending stepwise to G (12th fret).

Ex. 14

66



Detailed description: A musical staff in 4/4 time with a treble clef. It contains a sequence of 16 eighth notes in a single line, starting on E (9th fret) and ascending stepwise to G (12th fret).

70 Ex. 15



74



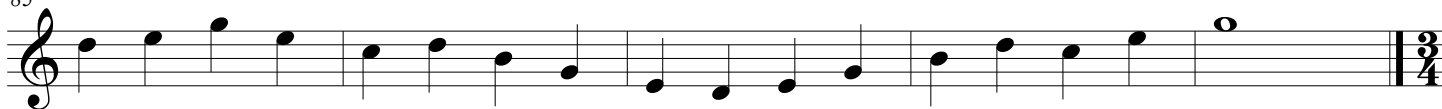
78



81 Ex. 16



85



Note Spelling Exercises  
level 3

90

A String 2 Fret 10      B String 2 Fret 12      C String 2 Fret 13

Detailed description: A musical staff in 3/4 time with a treble clef. It contains three notes: an A note on the second line (fret 10), a B note on the second space (fret 12), and a C note on the second space (fret 13). The staff ends with a double bar line and a 4/4 time signature.

Ex. 17

91

Detailed description: A musical staff in 4/4 time with a treble clef. It contains a sequence of 12 notes: A, B, C, D, E, F, G, A, B, C, D, E. Each note is on a single stem with a flag, indicating sixteenth notes. The notes are on the second line (A), second space (B), second space (C), third line (D), third space (E), fourth line (F), fourth space (G), and fifth line (A, B, C, D, E).

Ex. 18

96

Detailed description: A musical staff in 4/4 time with a treble clef. It contains a sequence of 12 notes: A, B, C, D, E, F, G, A, B, C, D, E. Each note is on a single stem with a flag, indicating sixteenth notes. The notes are on the second line (A), second space (B), second space (C), third line (D), third space (E), fourth line (F), fourth space (G), and fifth line (A, B, C, D, E).

Ex. 19

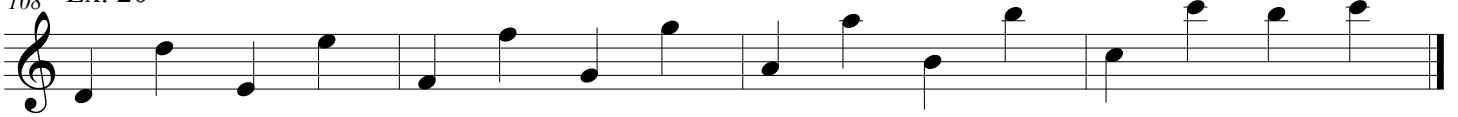
100

Detailed description: A musical staff in 4/4 time with a treble clef. It contains a sequence of 12 notes: A, B, C, D, E, F, G, A, B, C, D, E. Each note is on a single stem with a flag, indicating sixteenth notes. The notes are on the second line (A), second space (B), second space (C), third line (D), third space (E), fourth line (F), fourth space (G), and fifth line (A, B, C, D, E).

104

Detailed description: A musical staff in 4/4 time with a treble clef. It contains a sequence of 12 notes: A, B, C, D, E, F, G, A, B, C, D, E. Each note is on a single stem with a flag, indicating sixteenth notes. The notes are on the second line (A), second space (B), second space (C), third line (D), third space (E), fourth line (F), fourth space (G), and fifth line (A, B, C, D, E).

108 Ex. 20



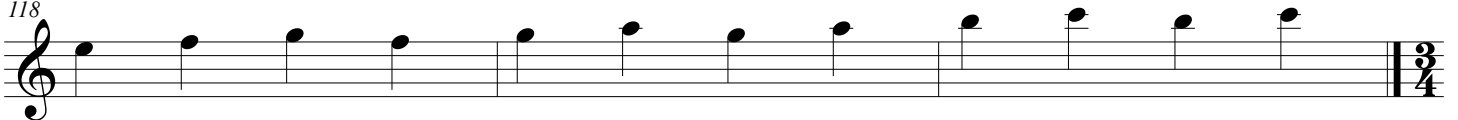
112 Ex. 21



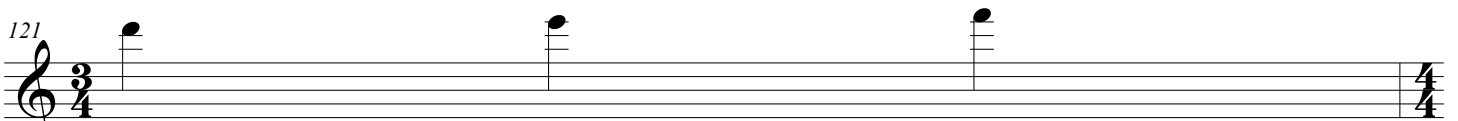
115



118



121



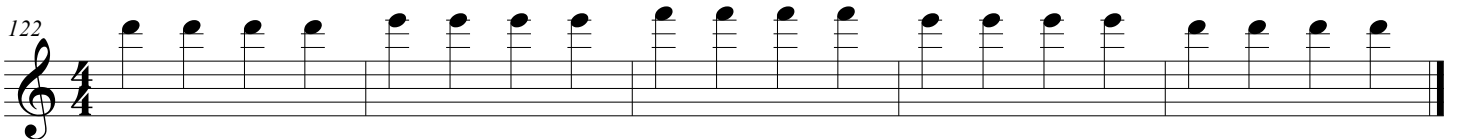
D  
String 1  
Fret 10

E  
String 1  
Fret 12

F  
String 1  
Fret 13

Ex. 22

122



Ex. 23

127

Musical notation for Exercise 23, starting at measure 127. It consists of a single treble clef staff with eight quarter notes: G4, A4, B4, C5, B4, A4, G4, and F4.

Ex. 24

129

Musical notation for Exercise 24, starting at measure 129. It consists of a single treble clef staff with a sequence of notes: G4, A4, B4, C5, B4, A4, G4, F4, E4, D4, C4, B3, A3, G3, F3, E3, D3, C3, B2, A2, G2.

133

Musical notation for Exercise 24, starting at measure 133. It consists of a single treble clef staff with a sequence of notes: G4, A4, B4, C5, B4, A4, G4, F4, E4, D4, C4, B3, A3, G3, F3, E3, D3, C3, B2, A2, G2.

137

Musical notation for Exercise 24, starting at measure 137. It consists of a single treble clef staff with a sequence of notes: G4, A4, B4, C5, B4, A4, G4, F4, E4, D4, C4, B3, A3, G3, F3, E3, D3, C3, B2, A2, G2.

141

Musical notation for Exercise 24, starting at measure 141. It consists of a single treble clef staff with a sequence of notes: G4, A4, B4, C5, B4, A4, G4, F4, E4, D4, C4, B3, A3, G3, F3, E3, D3, C3, B2, A2, G2.



Note Spelling Exercises  
level 3

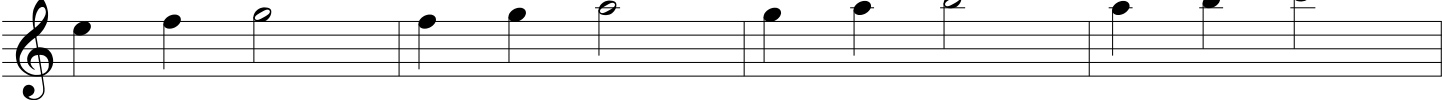
146 Ex. 25



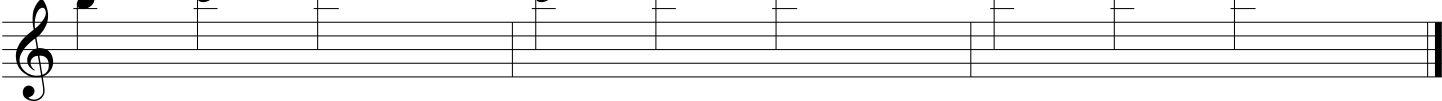
150



154



158



Ex. 26



164

